



▶ **TRUSTEE AREA
PROCESS**

BONITA SCHOOL DISTRICT

OCTOBER 6, 2021



**COOPERATIVE
STRATEGIES**
ASSESS • PLAN • FUND • BUILD

▶ BACKGROUND

WHAT IS THE CALIFORNIA VOTING RIGHTS ACT (“CVRA”)?

- Took effect January 1, 2003.
- Prohibits the use of “at-large” elections when such an election system:

“impairs the ability of a protected class to elect candidates of its choice or its ability to influence the outcome of an election....”

-(Elections Code §14027.)

▶ TYPES OF ELECTIONS

AT-LARGE ELECTIONS

Candidates must reside within the District's boundaries and are elected by all the voters who reside in the District's boundaries (Education Code Section 5030(a)). This is the method of election currently used by Bonita Unified School District ("BUSD").

FROM-TRUSTEE AREA ELECTIONS

Candidates must reside in specific geographic areas within the District's boundaries called "Trustee Areas" but are elected by all the voters who reside in the District's boundaries (Education Code Section 5030(c)).

BY-TRUSTEE AREA ELECTIONS

Candidates must reside in specific Trustee Areas within the District's boundaries and are elected only by the voters who reside in the same Trustee Areas (Education Code Section 5030(b)). ***This method of election is the only method that is safe from challenge under the California Voting Rights Act.***

▶ TRUSTEE AREA PROCESS

DATE	ACTIVITY
October 6, 2021	Board Meeting: First Pre-Map Public Hearing and Presentation
November 3, 2021	Board Meeting: Second Pre-Map Public Hearing
November 2021	Preparation of draft trustee area scenarios
December 8, 2021	Board Meeting: First Public Hearing on Trustee Area Scenarios
January 12, 2021	Board Meeting: Second Public Hearing on Trustee Area Scenarios
February 2, 2022	Board Meeting: Third Public Hearing on Trustee Area Scenarios (If Necessary)
February/March 2022	County Committee on School District Organization Holds a Public Hearing and Considers Approval of Change in Election Method and Trustee Area Map
November 8, 2022	First Election Held Utilizing Trustee Areas

▶ CONSIDERATIONS IN TRUSTEE AREAS



Each area shall contain nearly equal number of inhabitants



Follow man-made and natural geographic features, as much as possible



Drawn to comply with the Federal Voting Rights Act



Respect incumbency, if possible



Compact and contiguous, as much as possible



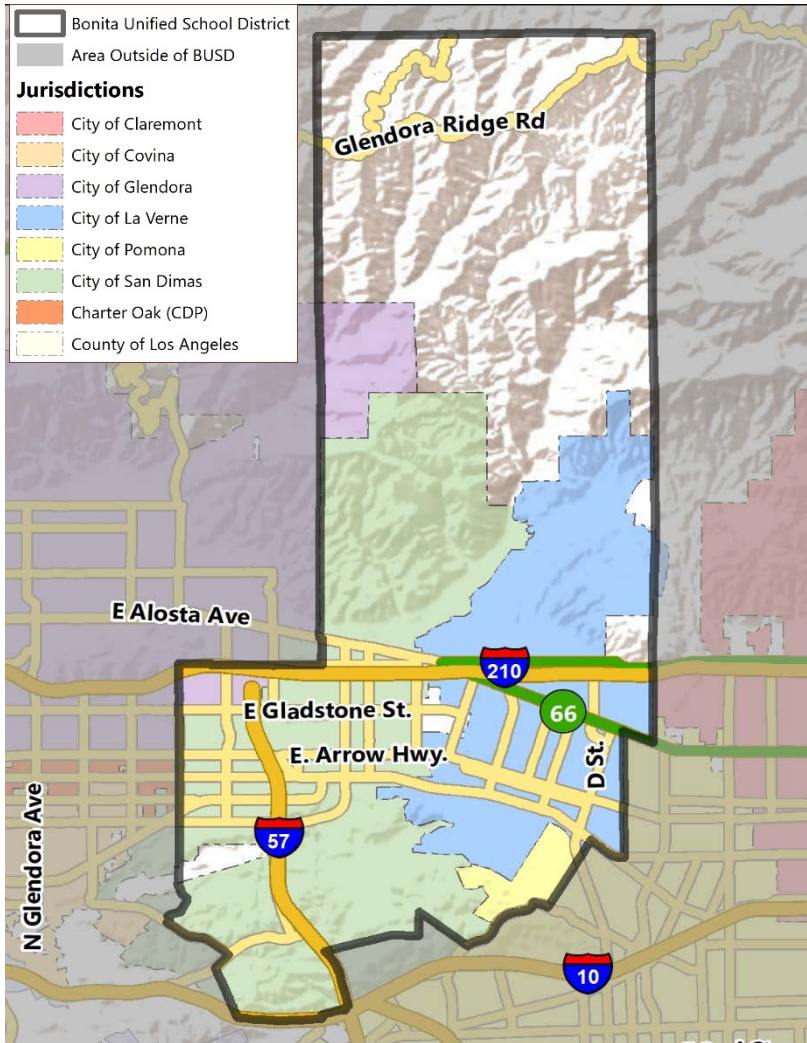
Other local considerations (i.e., school boundaries, locations of school sites)



Respect communities of interest, as much as possible

▶ DISTRICT DEMOGRAPHICS

2020 CENSUS DATA

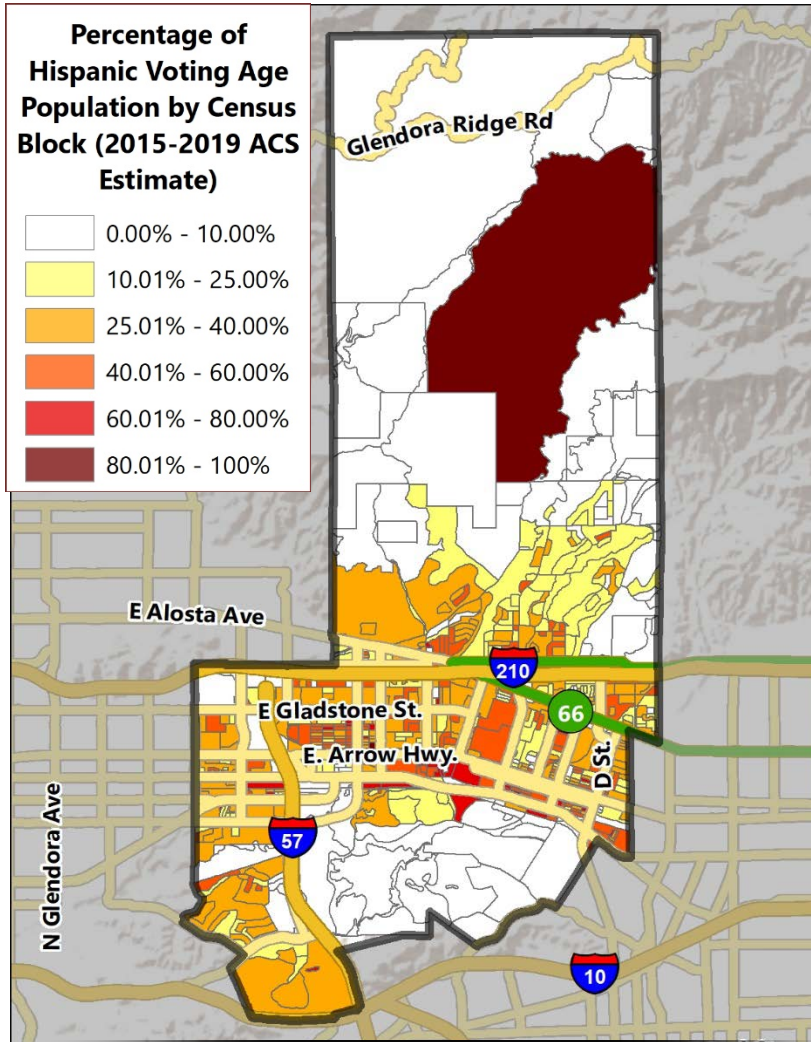


Population	Total Population		Age 18 and over	
	Total	%	Total	%
Hispanic/Latino	23,528	36.9%	17,371	33.8%
White	27,400	43.0%	23,721	46.2%
Black / African American	2,105	3.3%	1,732	3.4%
American Indian /Alaska Native	168	0.3%	157	0.3%
Asian	7,716	12.1%	6,333	12.3%
Native Hawaiian/ Pacific Islander	71	0.1%	60	0.1%
Two or More Races	378	0.6%	291	0.6%
Other	2,423	3.8%	1,693	3.3%
Total	63,789	100%	51,358	100%

*Source: Statewide 2021 Redistricting Database (Sept 27 file) (Census 2020)

▶ DISTRICT DEMOGRAPHICS

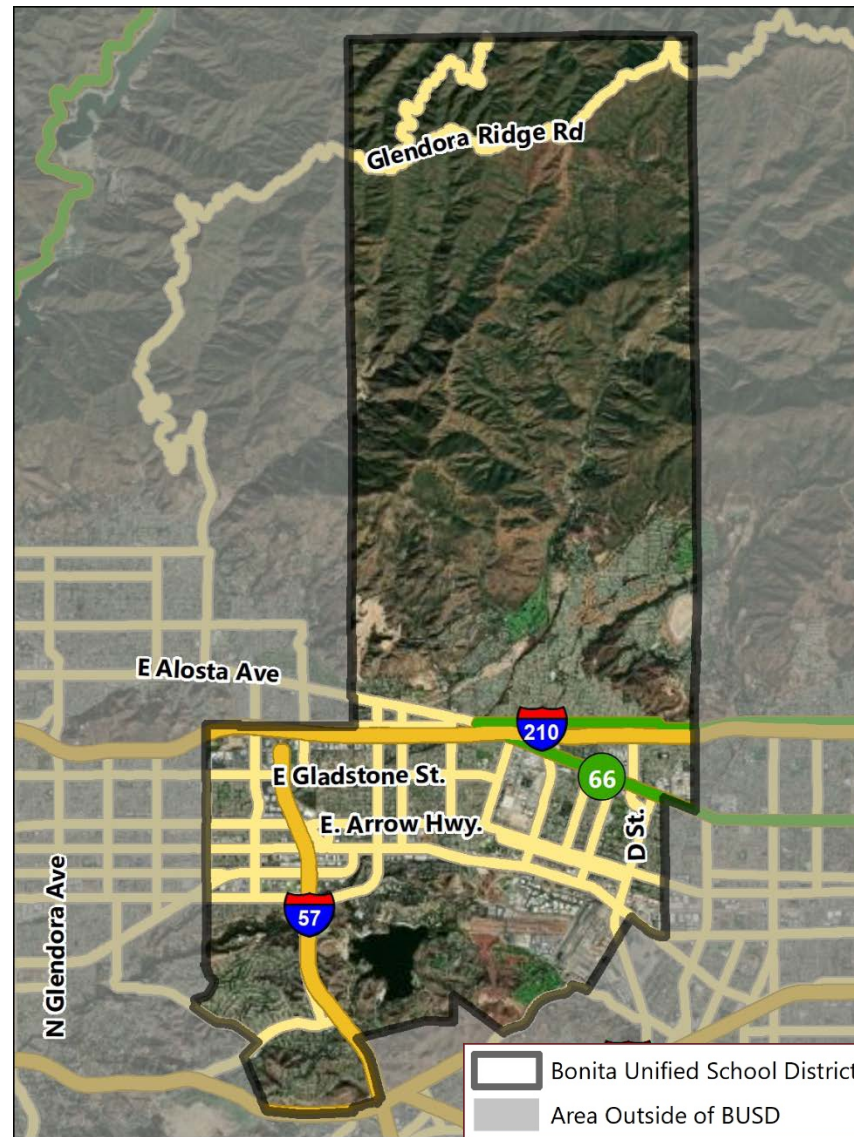
CITIZEN VOTING AGE POPULATION ESTIMATES



Population	2015-2019 CVAP	
	Total	%
Hispanic/Latino	14,581	31.6%
White	24,741	53.6%
Black / African American	1,231	2.7%
American Indian / Alaska Native	71	0.2%
Asian	4,331	9.4%
Native Hawaiian/ Pacific Islander	93	0.2%
Two or More Races	1,076	2.3%
Total	46,124	100%

*Source: American Community Survey, 2015-2019 Data

▶ HOW SHOULD LINES BE DRAWN?



▶ PRE-MAP PUBLIC HEARING
EXAMPLES OF FEEDBACK FOR MAPPING PROCESS

“I would like to keep Neighborhood X and Neighborhood Y in the same trustee area...”

▶ PRE-MAP PUBLIC HEARING
EXAMPLES OF FEEDBACK FOR MAPPING PROCESS

I think:

- **Major Roads, Highways/Freeways**
- **All of Y community should be in one area**
- **Each elementary or middle school boundary should be in multiple/single areas**
- **Every trustee area should serve multiple school boundaries/sites**

... may make sense as a trustee area boundary because ...

- **It keeps communities together**
- **It provides good representation**



QUESTIONS